

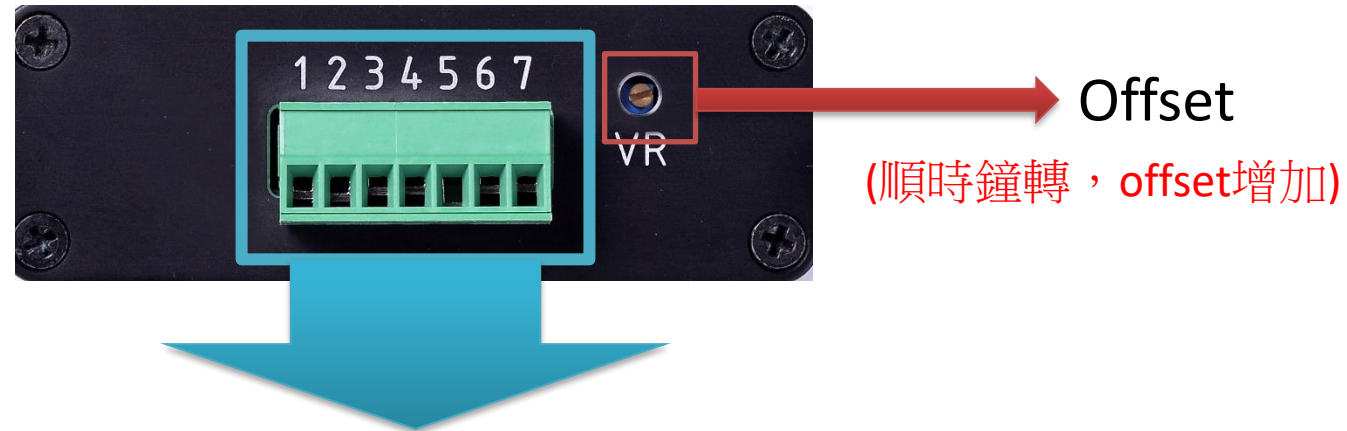
Strain Gage Amplifier WPC-SGA-300K-G1000

WPC Systems Ltd.

Justin Wu

2022-05-04





1	2	3	4	5	6	7
Sensor-	Sensor+	AGND	Vout	Vtune	24V	0V
連接到Strain gauge-	連接到Strain gauge+	訊號地線	輸出訊號	offset 調整 註1、2	電源輸入 (24Vin)	電源地線

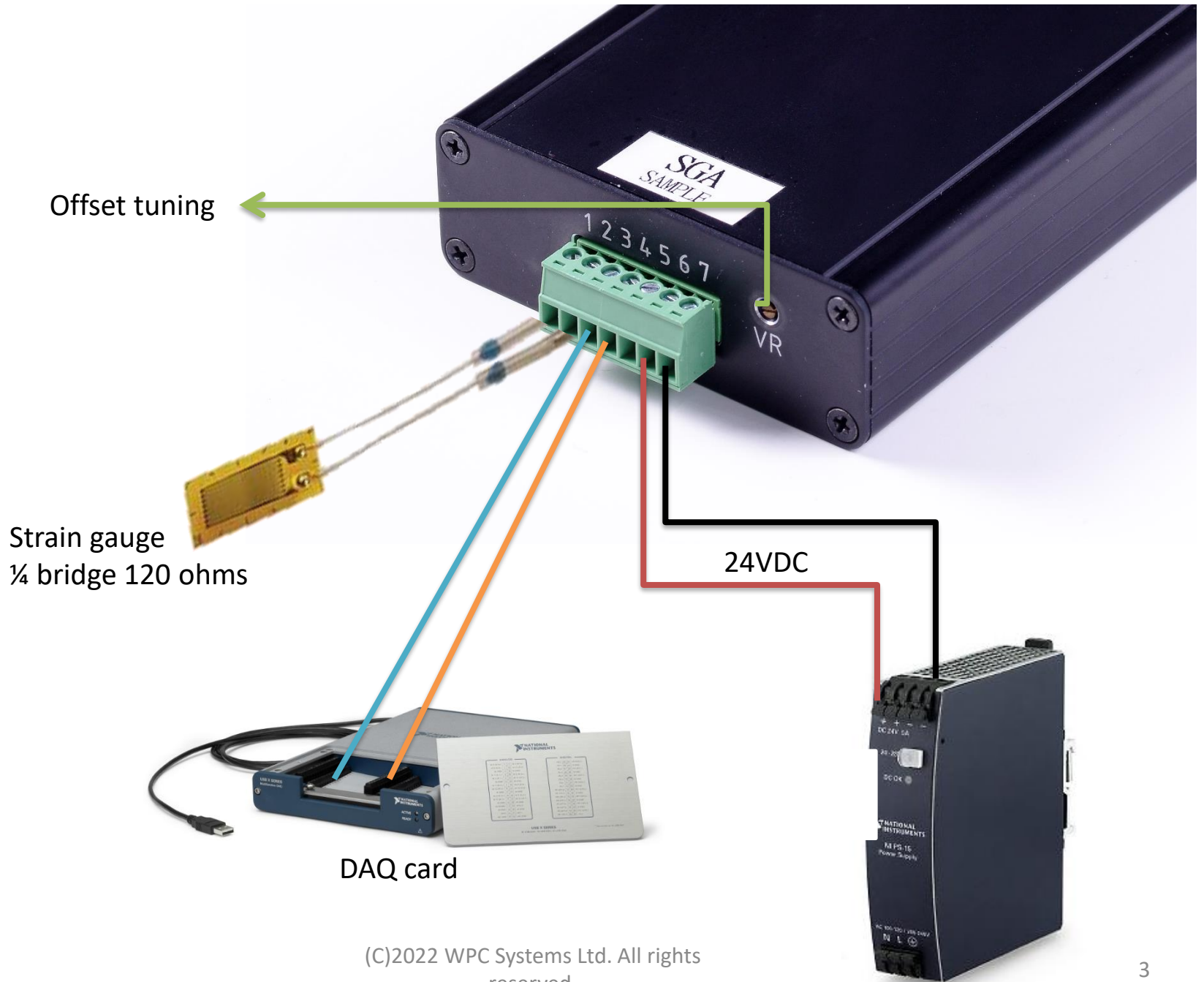
Sensor type: $\frac{1}{4}$ bridge 120 ohms

Bandwidth: 300 KHz

Excitation: +/-1.7 volts

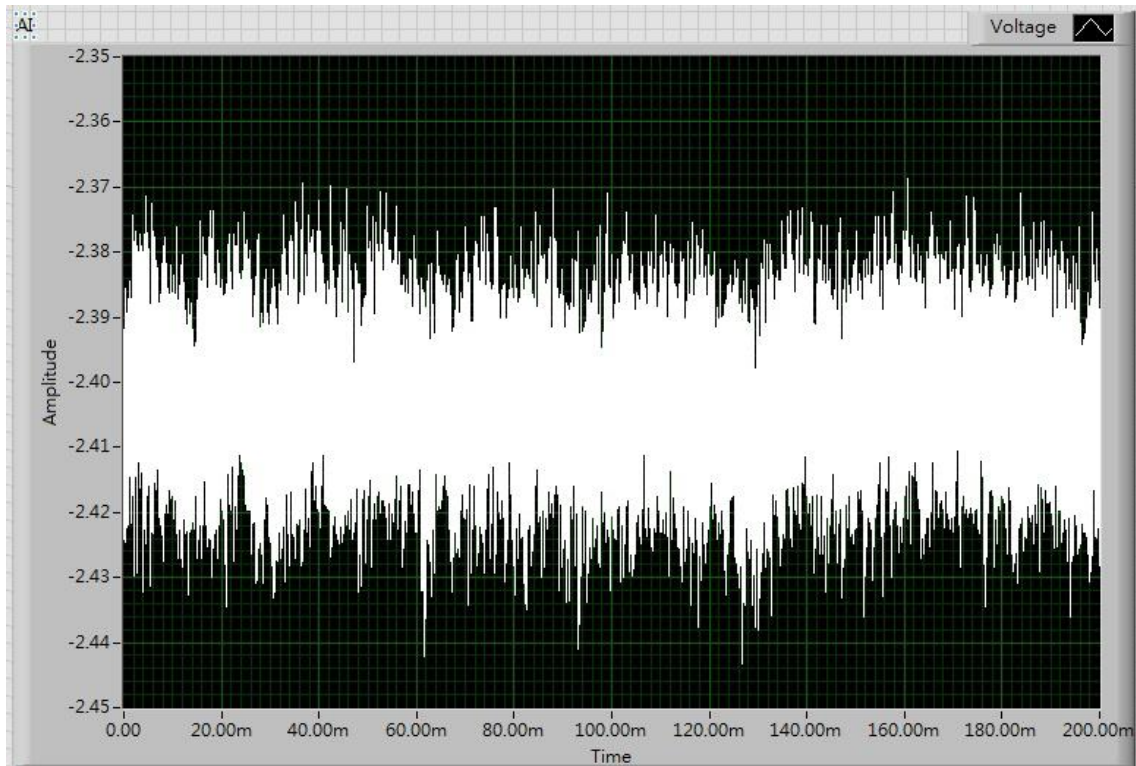
Gain: 1000 V/V

註：電源與訊號內部是隔離的，因此 0V 與 AGND 不相通

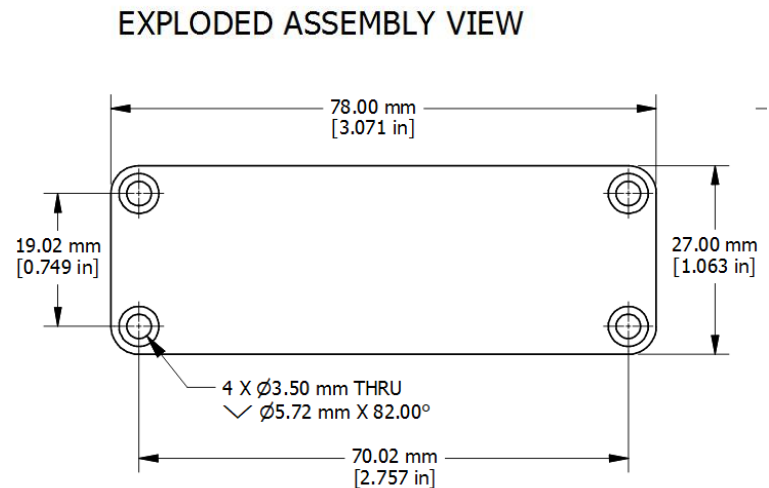
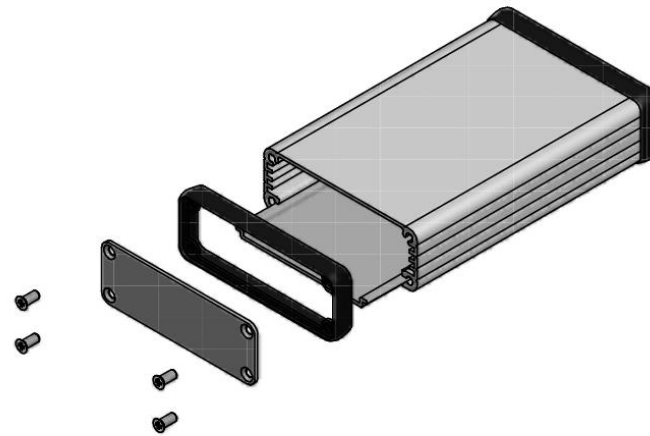
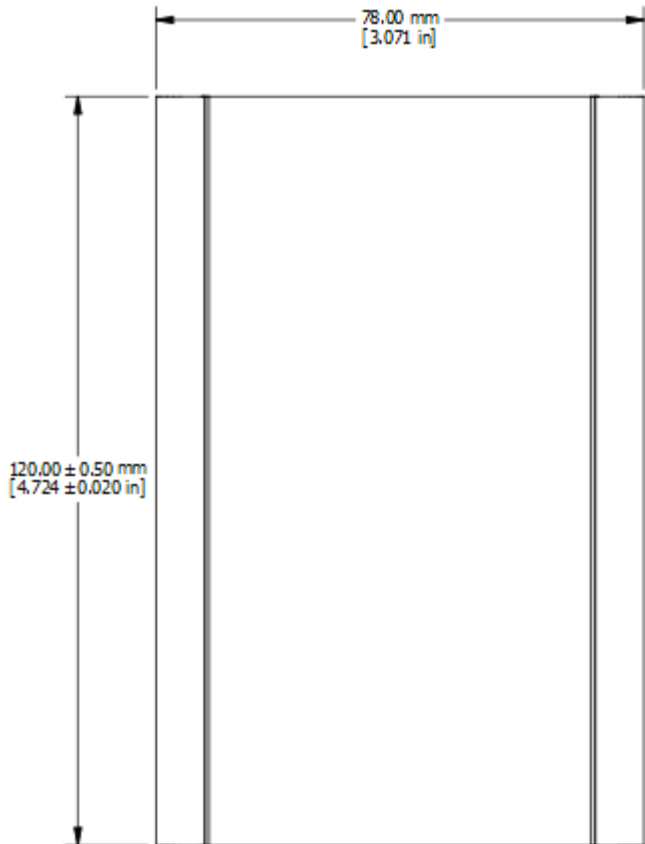


Noise evaluation

~60mV@300kHz (bandwidth)



Dimensional drawing

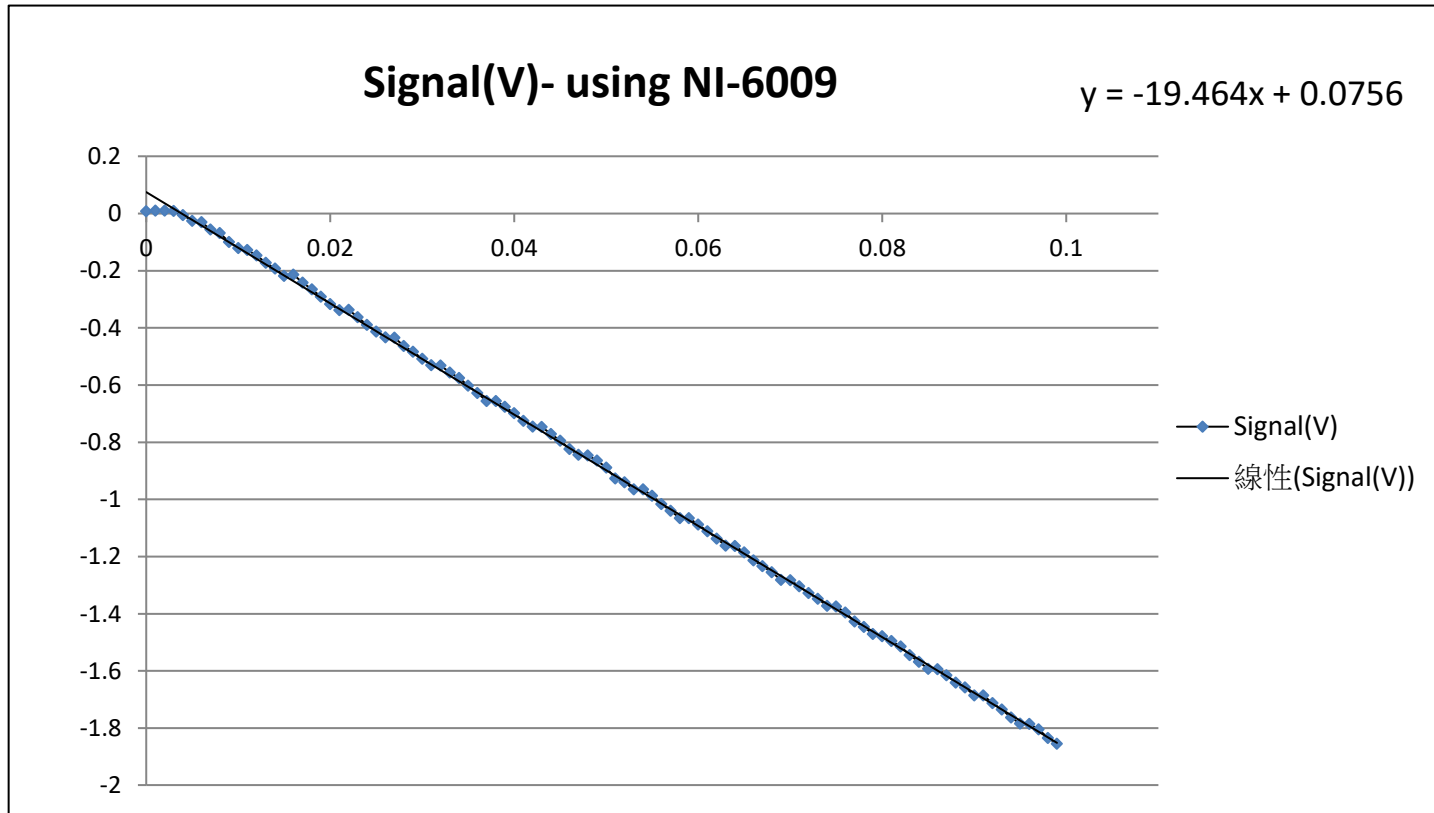


V-tune vs. offset

註1 : using NI-6009

每
每

Vtune	offset
+10mV	-190mV
-10mV	+190mV



註2 : using NI-6363

每
每

Vtune	offset
+10mV	-190mV
-10mV	+190mV

