

Active Low Pass Filter LPF-150 User manual

WPC Systems Ltd.

Justin Wu

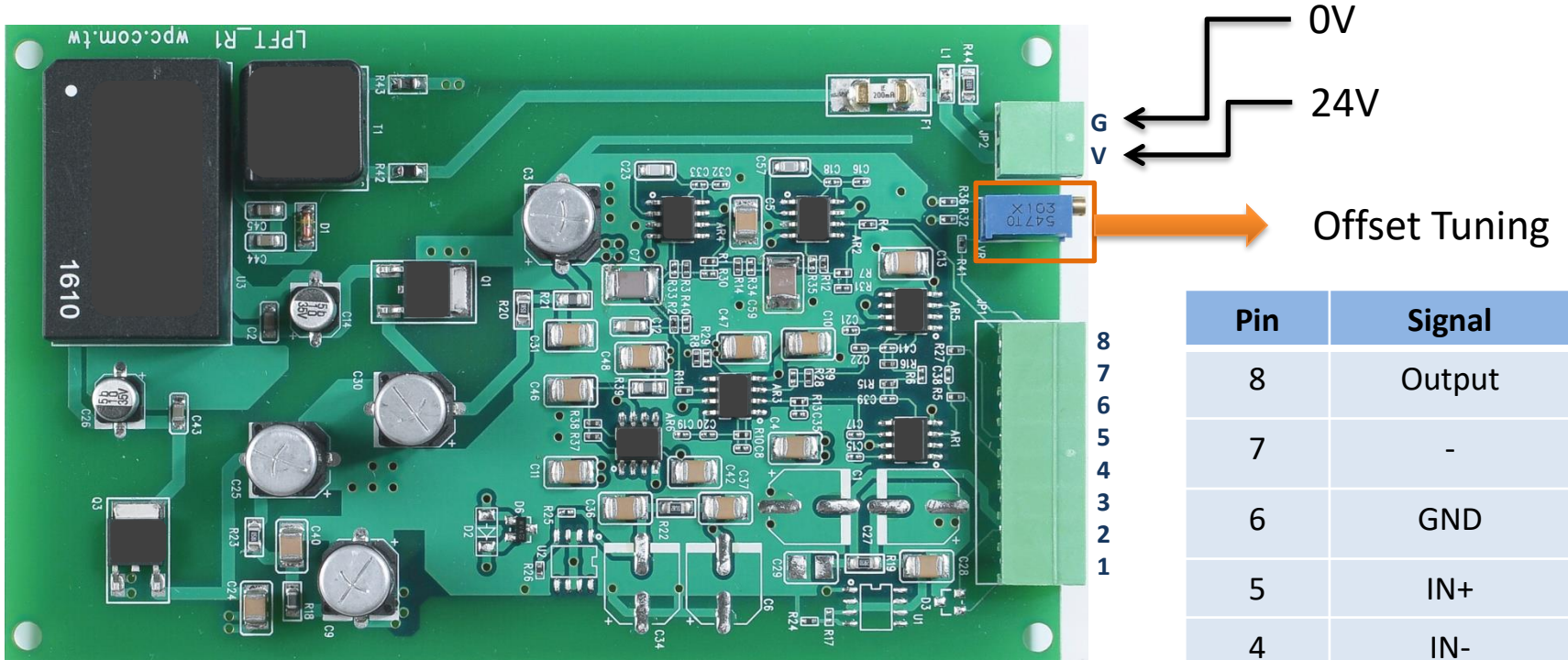
2022-05-31



Features

- Power: 24VDC
- Category: Active 4-order MFB low pass filter
- Bandwidth(-3dB): 150Hz
- Gain: 1
- Input range: +/-10V (single-ended)
- Output range: +/-10V (differential)
- Offset: VR tunable

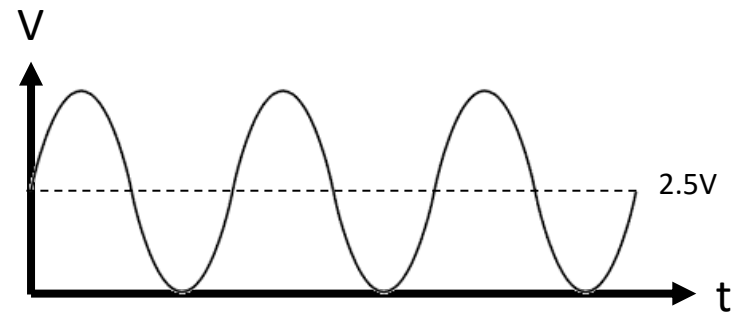
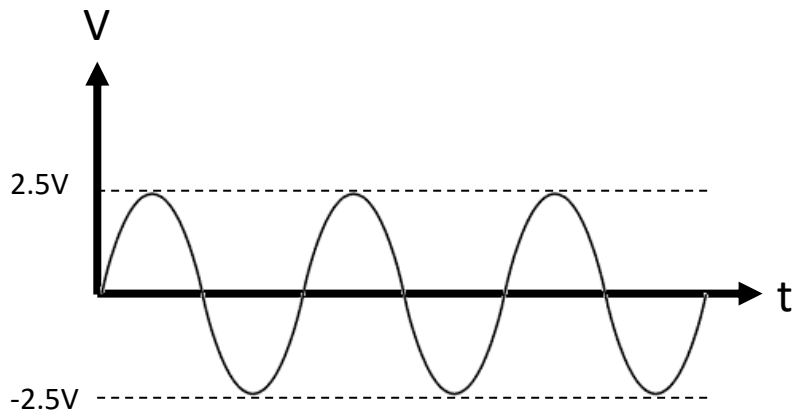
Connector pinout



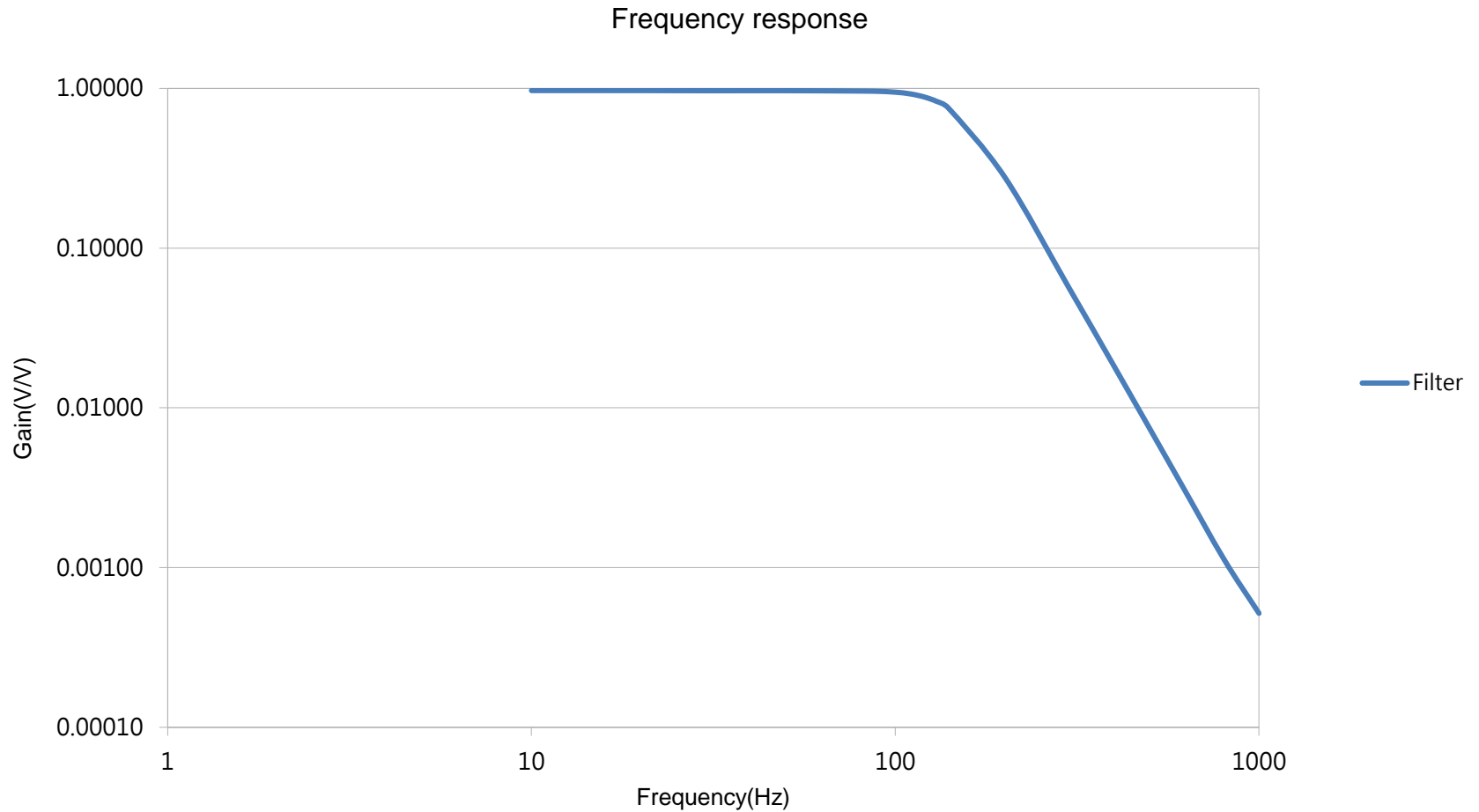
Pin	Signal
8	Output
7	-
6	GND
5	IN+
4	IN-
3	GND
2	-
1	-

關於 Offset tuning

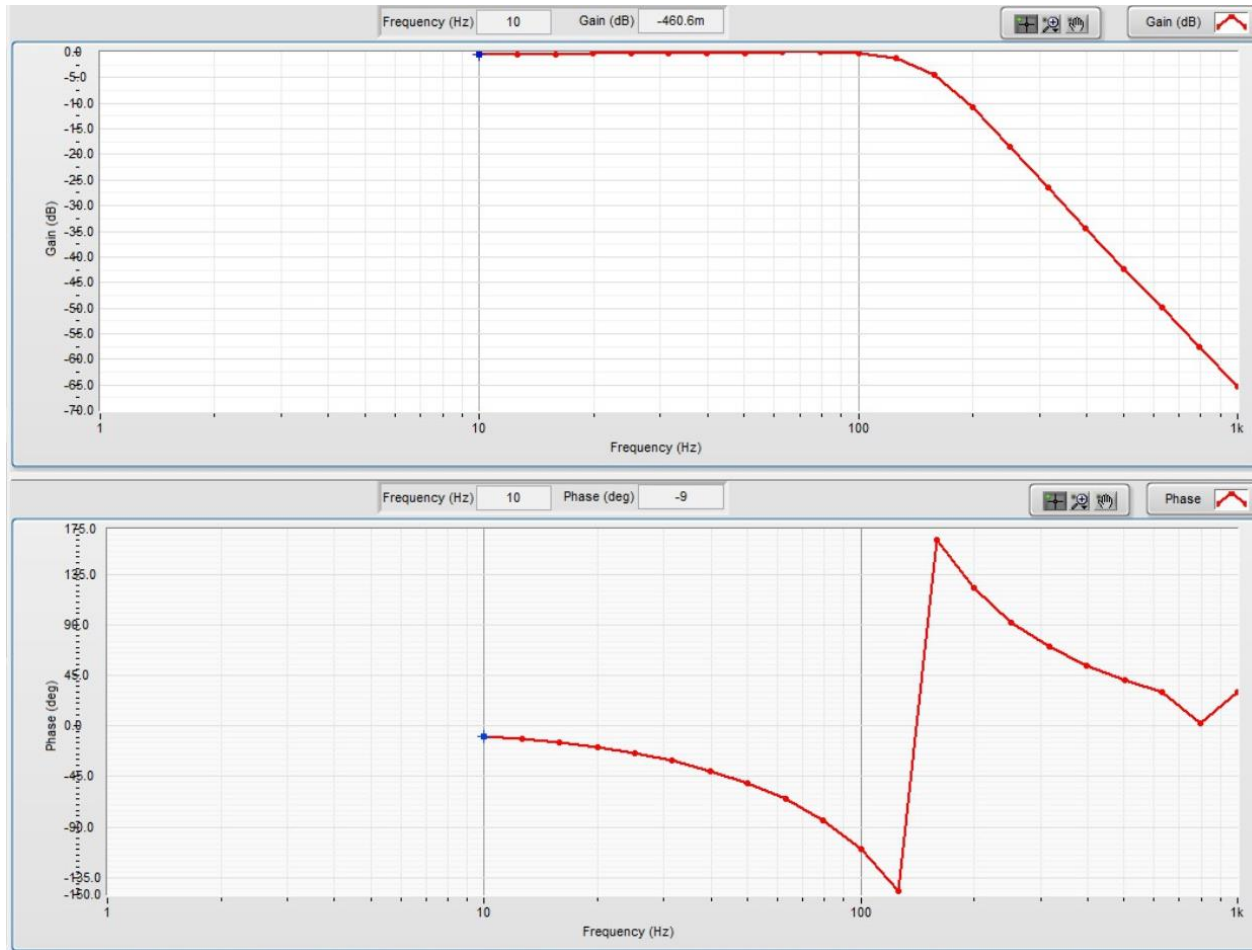
- LPF-150 出廠前都會手動歸零
- Offset tuning 功能還是保留給客戶調整，如訊號 $\pm 2.5V$ 訊號 offset 到 $2.5V$ 給 $0-5V$ 範圍的 DAQ 使用。



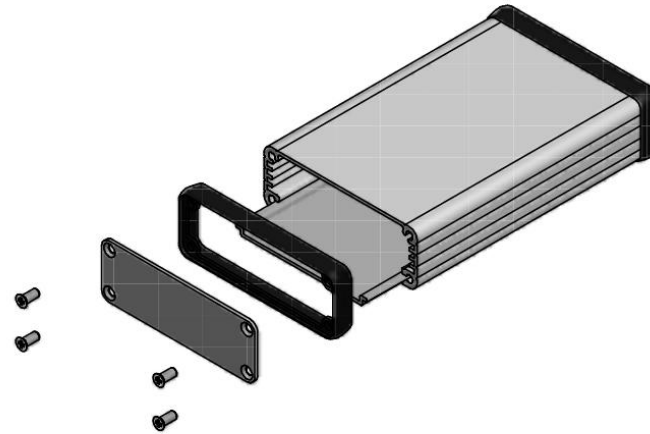
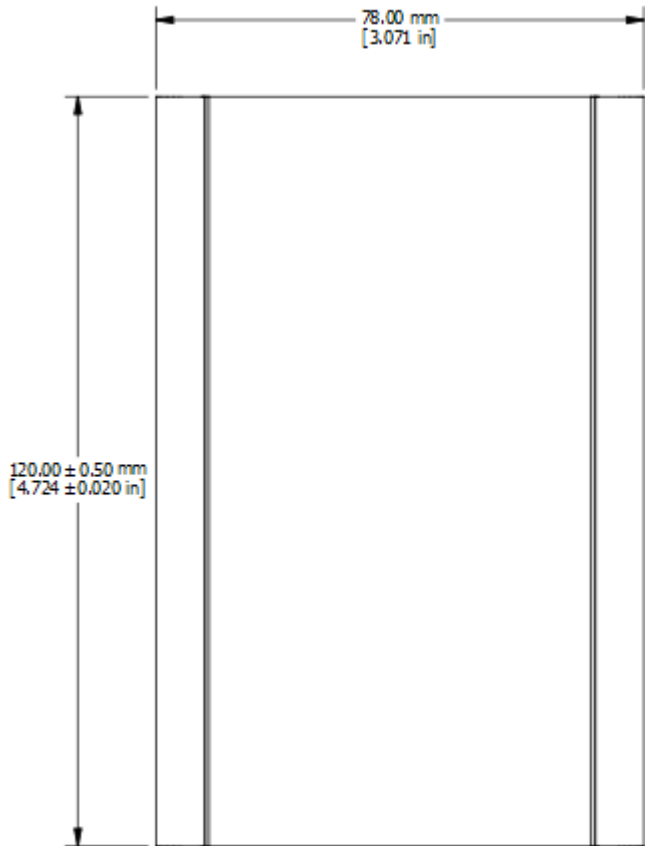
Frequency response



Gain/Phase spectrum



Dimensional drawing



EXPLODED ASSEMBLY VIEW

